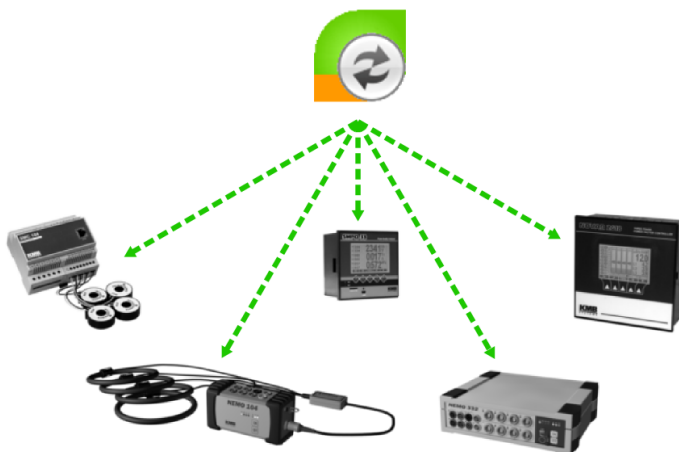


KMB Upgrade Firmware Tool

Application Note

Version 3.4



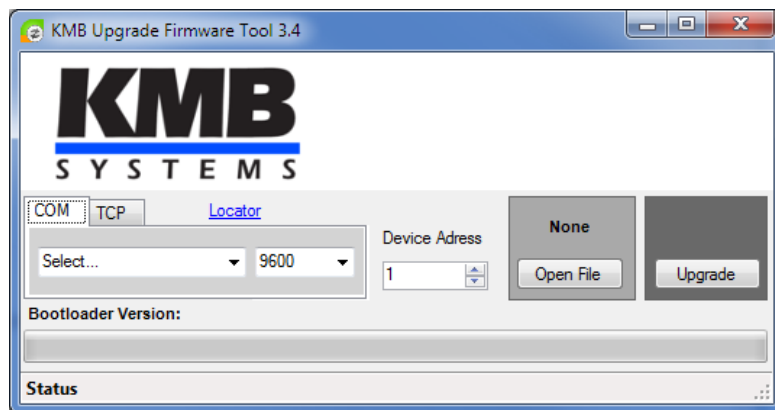


Figure 1: Simple, three step tool for KMB systems device firmware upgrade.

The device firmware can be upgraded over several communication channels. First you need to check the actual version. Visit the info screen in the device for '*firmware version*', '*hardware version*' and '*device type*' information. Alternatively you can find this information also in ENVIS.Daq software on the device identification panel. The appropriate firmware image can be obtained from our web pages or as a part of the device upgrade package. Use only versions for the correct device type and hardware version as indicated in the image.

Upgrade Process:

1. Start the '*KMB Upgrade Firmware Tool*' – the actual version is v3.4 and can be found after successful installation of ENVIS in the start menu under UpgradeTool link.
2. Instruments can be upgraded over USB, RS 232 or RS 485 communication line.
3. Start the tool and prepare a correct firmware file. It should be *.FRM or *.ZIP file containing the appropriate device firmware.
4. Choose actual serial port of the instrument being upgraded.
5. Click on the 'Open File' button and select the file.
6. Press 'Upgrade' button and follow the instructions.
7. Wait until the upgrade operation finishes.


It is recommended to perform full 'Reset to Default' operation within ENVIS.Daq on instrument which support this feature. It will erase all the stored data and configurations except for remote communication configuration.

Troubleshooting: If attempt to upgrade the instrument fails the instrument can enter the upgrade process directly after its start-up procedure:

1. If the tool interrupts while performing step 8 with an information that the port has been closed, simply unplug the USB cable and connect it again. The instrument might get another port assigned so you should select it again (step 4). Proceed with step 7 which should now continue immediately.
2. For SMPQ, SMP, SMV: Restart the device manually by entering Info screen and holding button 2 and 4 pressed (left and right for SMV device).

For NEMO instruments: Restart device manually while holding  and  buttons for about 20 seconds.

3. Device enters the manual upgrade mode. If USB cable is connected than the USB led light will turn on.
4. During next 5 minutes the correct firmware must be provided. If firmware upgrade doesn't start in specified time than the device tries to boot normally.

5. For SMPQ, SMP, SMV, SIMON 341 PLUS, SIMON PQ, SMC, ES 101: if the firmware check test fails, the device automatically stays in the manual upgrade mode after restart. To exit this mode press middle button on SMP, SMPQ analysers. In case of NEMO analysers hold button  for a while.
6. For USB: check if the cable is connected correctly and the device is recognized by the system. Reconnect the device or update USB driver if necessary.
7. Press 'Upgrade' button in the Firmware Upgrade Tool and proceed in the usual way.
8. If all attempts to upgrade firmware fails please contact your technical support with detailed information about the specific instrument type/version and software and firmware revision.